

Laser Focus World®

Photonics Technologies & Solutions for Technical Professionals Worldwide

Fiber-optic sensing provides real-time intrusion monitoring

PAGE 23

- Silicon-photonics technology drives next-gen communications **PAGE 32**
 - Thermal compensation improves positioning repeatability **PAGE 40**
 - Liquid-crystal metasurface optics enable next-generation lidar beam steering **PAGE 43**
- BioOptics*
WORLD.
- Imaging technique combo advances disease research; Mid-IR upconversion speeds diagnostic imaging **PAGE 35**

Smart fiber-optic sensing systems enhance physical border walls and fences

WIELAND HILL, JOHN J. WILLIAMS, and GARETH LEES

Distributed fiber-optic sensing architectures complement physical borders by providing accurate, cost-effective, real-time monitoring of perimeter intrusions.

Fiber-optic sensing systems based on elastic or inelastic light scattering effects in standard telecommunications-grade optical fibers are powerful tools for analyzing spatially resolved profiles of physical quantities along fiber-optic cables. Their success in multiple applications comes from the cost-effective measurement of thousands of locations with a single interrogator, the large distance range, the absence of electrical power in the application, and the immunity to electromagnetic interference.

Within the last 30 years, numerous technologies have been developed for distributed or multipoint measurement of physical quantities using optical fibers. Technologies using specially prepared fiber sections like fiber Bragg grating (FBG)-based systems gained relevance in monitoring equipment at single or multiple points. Truly distributed technologies using standard optical fibers without these reflective structures are, however, clearly dominating the surveillance of large infrastructure assets because

of their capability to monitor thousands of locations, easy integration, reliable operation, and low price of the standard sensor cable.

Light-scattering mechanisms

Optical fibers exhibit three scattering processes that have been found to be extremely useful in measuring physical quantities like temperature, strain, or vibration (dynamic strain or sound) with high spatial resolution: Brillouin, Raman, and Rayleigh scattering (see table, p. 24).

molecular vibrations). Rayleigh scattering is elastic scattering caused by static inhomogeneities of the refractive index. Each scattering process shows a characteristic spectrum with specific dependencies on the physical quantities to be analyzed (see Fig. 1).

Raman scattering is widely used in distributed temperature sensing (DTS). That is, DTS uses a simple optical filter scheme to measure the amplitudes of anti-Stokes and Stokes components and then calculates temperature profiles from their ratio.

Brillouin scattering requires a somewhat more complex detection scheme since its frequency shift with respect to the laser line is fairly small. The analyzed Brillouin frequency depends on temperature and strain, which often leads to the need to separate both parameters. This separation can be done by using a combination of loose-tube and tight-buffered fibers, where the loose-tube fiber only experiences the temperature effect, or by measuring the amplitude of the Brillouin signal as a second measurand enabling the separation.

Distributed acoustic sensing (DAS) is commonly based on coherent Rayleigh scattering. Interference of Rayleigh-scattered light from multiple scattering centers within the fiber leads to a

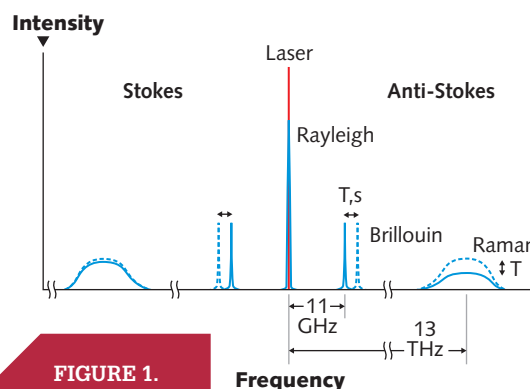


FIGURE 1.

A schematic representation details the spectral components of scattered light within an optical fiber. (Courtesy of NKT Photonics)

Brillouin and Raman scattering are inelastic scattering processes involving energy transfer to or from thermal vibrations (optical and acoustic phonons,

Optical measurands and physical parameters of scattering processes in optical fibers

Scattering process	Optical measurands	Physical parameters
Raman	Amplitude (anti-Stokes, Stokes)	Temperature
Brillouin	Frequency, amplitude	Temperature, strain
Rayleigh	Amplitude, phase	Dynamic strain and temperature

speckle-like pattern that depends on the phase difference between the superposing light waves. This pattern is extremely sensitive to length changes within the fiber because a few tens-of-nanometers difference causes a considerable change of phase for light with a typical wavelength around 1.5 μm .

Measuring the amplitude of the Rayleigh signal is sufficient for sensitive detection of events with broad acoustic spectrum like walking, driving, shooting, and digging or tunneling, whereas a phase

measurement is required for determining the frequency of narrowband signals from motors, pumps, or orifice sounds. However, phase information is always required for precise quantitative analysis of signals due to the strongly nonlinear behavior of the amplitude signal.

Application-specific sensing

Main application areas of Raman-based DTS are fire detection in tunnels and buildings, power cable monitoring, pipeline monitoring, and oil and gas in-well (or

downhole) monitoring, as well as geothermal/environmental applications. In fact, DTS has already become the standard method of fire detection for rail and road tunnels in most regions of the world due to its reliable, cost-efficient, and fast alarming with precise fire localization

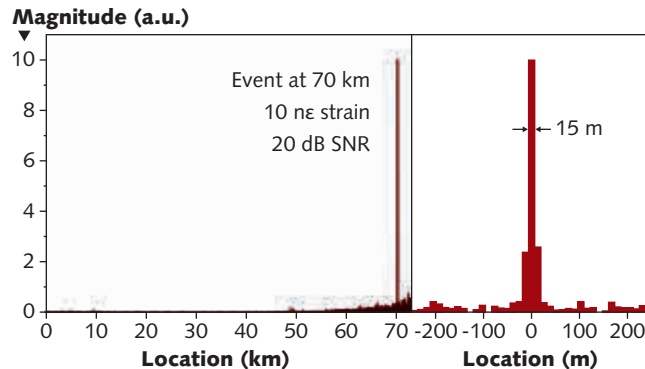


FIGURE 2. Distributed acoustic sensing (DAS) is sensitive enough to generate a strong signal, even at a distance of 70 km by periodically stretching 15 m of fiber by only 150 nm. (Courtesy of NKT Photonics)

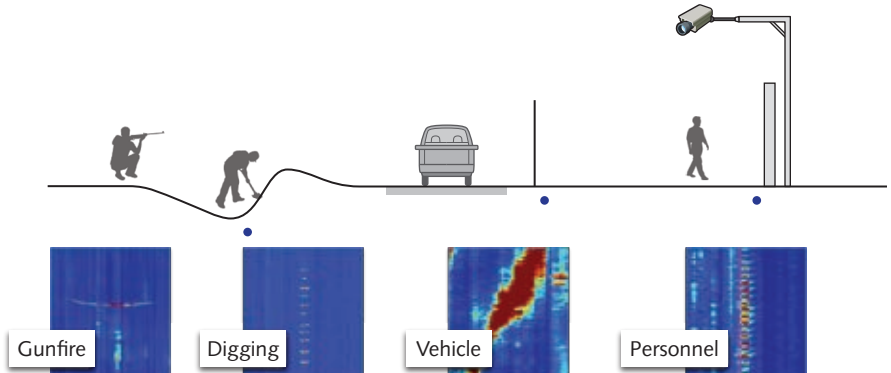


FIGURE 3. A typical layout of a fiber-optic sensing system is shown along with the detection possibilities through various observed signals that can be coupled with automated alarms in software. (Courtesy of OptaSense)

PICO

DC-DC CONVERTERS

2V to 10,000 VDC Outputs
1-300 Watt Modules
Regulated/Proportional/Programmable
Isolated/Single/Dual Outputs

High Reliability
Greater than 1,000,000 hrs.
Mil Hbk 217F

Military Upgrades
Expanded operating temperature
-55° to +85° C, no derating required

Environmental Screening
Selected Screening, Mil Std 883

ULTRA Miniature
From 0.5" x 0.5" x 0.2"

Surface Mount/Thru-Hole

- Custom Models
- US Manufactured
- AS 9100 Approved

High Reliability AC/DC
Power Supplies, Transformers
and Inductors

**VISIT OUR EXCITING
NEW WEBSITE**

www.picoelectronics.com

Featuring our easy-to-use
product Search Wizard!

AS9100D
CERTIFIED
TUV

See PICO's full line catalog at
www.picoelectronics.com

YOUR PROVEN SOURCE.
Over 50 years providing
reliable products. Over 2,500
Standard Modules.

800-431-1064

PICO ELECTRONICS, Inc.
143 Sparks Ave., Pelham, New York 10803
Call Toll Free 800-431-1064 • FAX 914-738-8225
E Mail: info@picoelectronics.com

in tunnels with a length up to 10 km by using a single interrogator (two interrogators are commonly used for achieving redundancy). Power cable monitoring by DTS is also becoming a standard method because with the transition to renewable energies, higher and stronger fluctuating loads must be transmitted by the grid without causing cable damage by overheating.

In addition to some of the more demanding DTS applications, Brillouin scattering is widely used in distributed strain sensing (DSS), mostly related to ground

install the fiber on the fence. Then, one obviously needs dedicated algorithms for avoiding false alarms by ambient sound from wind or traffic. If one wants to detect footsteps or vehicle activity approaching a perimeter fence or wall or even a property without a physical barrier, it may be better to bury the cable. Then, airborne sound is greatly reduced, whereas structure-born sound is efficiently transmitted to the fiber.

It is common practice to have the sensing cable installed both on the fence and

Appropriate fiber installation is another important topic. For detecting fence climbing or cutting, it is necessary to install the fiber on the fence.

movements and their impact on physical infrastructure like pipelines, cables, dams, train tracks, bridges, tunnels, and buildings—often referred to as “structural health monitoring” applications.

Compared to DTS and DSS, modern DAS interrogators based on Rayleigh scattering demonstrate huge sensitivity (see Fig. 2). Periodic stretching of a 15-m-long fiber section by 10 ne (150 nm in total) results in a huge signal, even at a distance of 70 km. The observed spatial resolution for this very weak and remote event is only 15 m—even sub-nanostrain or few-nanometer resolutions are achieved at shorter distances.

Sensitivity is, of course, not the only important feature of DAS. Since there are many acoustic signals of interest, suitable algorithms are required for the reliable identification of events (see Fig. 3). Algorithms may be based on spectral, temporal, and/or spatial characteristics on the event and, more recently, machine learning techniques are being applied to DAS data to reduce false alarms.

Appropriate fiber installation is another important topic. For detecting fence climbing or cutting, it is necessary to

in the ground to improve the probability of detection of a threat while minimizing false alarm rate (see Fig. 4). A threat would be classified as an approach to the fence and then a subsequent disturbance on the fence at a nearby location.

DAS in a border-security context

With the ability to detect border incursions in a persistent and continuous manner, DAS provides low-cost, early warning of border activity over long distances

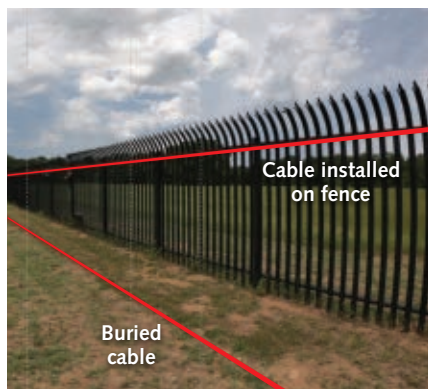
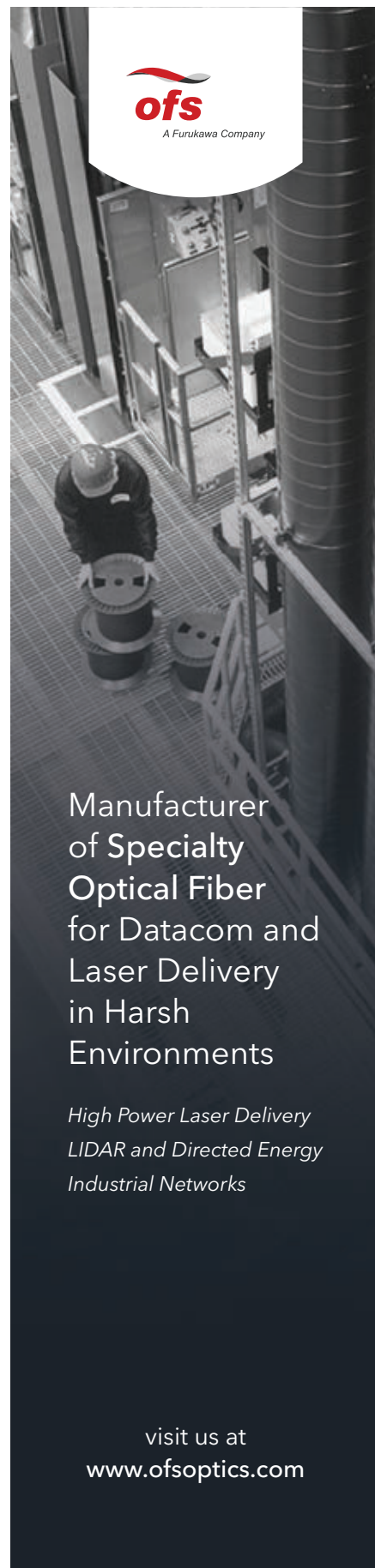


FIGURE 4. Fiber-optic sensing systems are small and can be discretely buried or placed along existing perimeter infrastructure. (Courtesy of AP Sensing)



ofs
A Furukawa Company

Manufacturer of Specialty Optical Fiber for Datacom and Laser Delivery in Harsh Environments

*High Power Laser Delivery
LIDAR and Directed Energy
Industrial Networks*

visit us at
www.ofsoptics.com

and can be integrated with other layers of security such as cameras or unmanned aerial vehicles (UAVs).

There are essentially two main concepts of operations (CONOPS) with DAS in a border security context. First, in an ‘urban-to-urban’ border environment such as San Diego and Tijuana in the U.S. and Mexico, rapid detection and integration with border patrols’ other layers of security is important to enable a rapid and appropriate response. This is also the CONOPS at key choke points along several Eastern European borders, where intervention is the aim and response times can be measured in minutes or hours.

In urban-to-urban areas, DAS can also provide subterranean activity detection, which is sometimes present in high-risk areas where tunnels are used for people or contraband trafficking.

The second main CONOPS with DAS is for remote border regions, where response and intervention times are measured in hours or even days. In this scenario, DAS still provides real-time detection, but not every detection is necessarily going to generate an immediate border management response. By providing persistent, continuous

coverage and crucially—with all detection activity stored in an archive—border management can gain insights of border pattern of life over extended periods of time (see Fig. 5).

Essentially, the DAS system can provide a heatmap of a border in terms of human activity and where there might be buildups of activity that require further attention. For example, if there is a trend of increased activity in a specific remote location along the border over a period of a week or a month, this could warrant a response from border management by applying additional technology or personnel in that specific location.

A physical barrier is a deterrent to border incursions and will likely slow down border crossings, but by itself it will not stop determined actors and it will not help border management understand what is happening along the border over time. Therefore, combining physical barriers with detection technology is crucial to a successful border security approach. Fiber-optic sensing is a cost-effective detection method over long distance that provides both real time information and archived pattern of life data over extended periods, which can aid in border security management and complement a physical barrier. ◀

Wieland Hill is director of Advanced Sensing Systems at NKT Photonics, Cologne, Germany, www.nktphotonics.com; **John J. Williams** is regional director of infrastructure monitoring for the Americas at OptaSense, Houston, TX, www.optasense.com; and **Gareth Lees** is research director at AP Sensing, Boblingen, Germany, www.apsensing.com; e-mail: wieland.hill@nktphotonics.com.

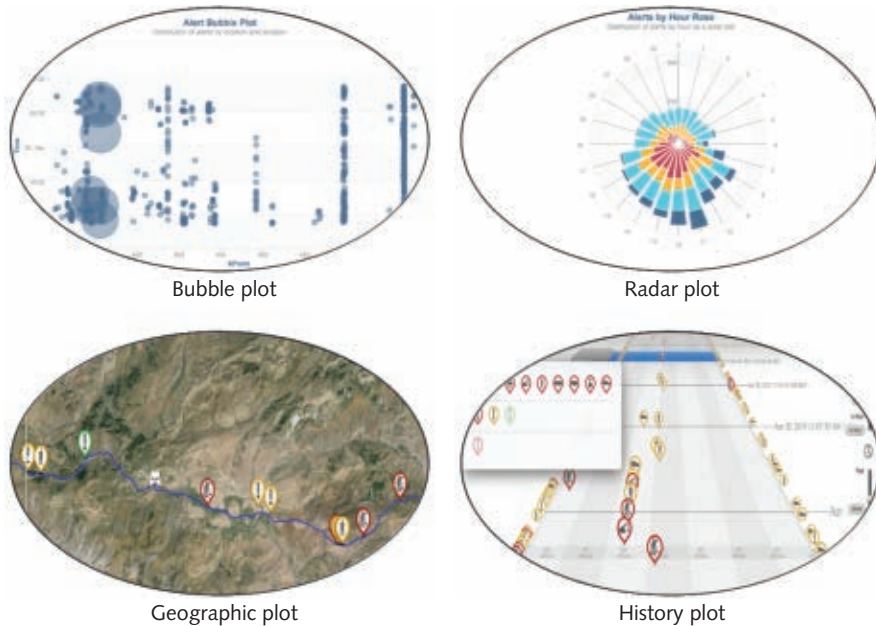



FIGURE 5. Control software for distributed sensing systems can output data in a variety of forms. (Courtesy of OptaSense)





Piezo Nanopositioning Systems
 Precision Micropositioners
 Single Molecule Microscopes
 Atomic Force Microscopes and NSOM
 Vacuum Compatible and Custom Solutions

www.madcitylabs.com
sales@madcitylabs.com

USA: +1 608 2980855

EU: +41 (0)44 803 98 18